



ENCORE

REAL ESTATE BROKERAGE

Phone: (262) 366-2526 / (414) 899-3537
Fax: (866) 671-0237
E-mail: Sales@EncoreWisconsin.com

Investment & Rental Property Specialists

\$65,000

PLANNED BUSINESS ZONED PARCEL



401 Host Drive | Lake Geneva | Wisconsin | 53147

Contact:

John Dyke, CCIM

Or Paul Rucinski

METRO MILWAUKEE OFFICE

N92 W17420 Appleton Ave, Suite 105
Menomonee Falls, WI 53051

WASHINGTON/DODGE COUNTY OFFICE

1530 Corporate Center Drive, Suite 6
West Bend, WI 53095

- Wooded Commercial Lot Located Minutes from Downtown Lake Geneva
- Approximately 1 Acre in Size
- Excellent for a Professional Office or Service Use
- Zoned PB (Planned Business District)
- Served by all Municipal Utilities
- Lot must be Separated from Adjacent Property (Split is Subject to City Approval)

Directions: From US Highway 12, take State Highway 50 (Main Street) Exit. Travel Westward to Edwards Boulevard. Go Southbound on Edwards Boulevard to Townline Road. Take Townline Road Westward to Wells Street. Travel Southbound on Wells Street to Host Drive. Parcel is Approximately 665' East of Wells Street.



ENCORE

REAL ESTATE BROKERAGE

Phone: (262) 366-2526 / (414) 899-3537
Fax: (866) 671-0237
E-mail: Sales@EncoreWisconsin.com

Investment & Rental Property Specialists



401 Host Drive | Lake Geneva | Wisconsin | 53147

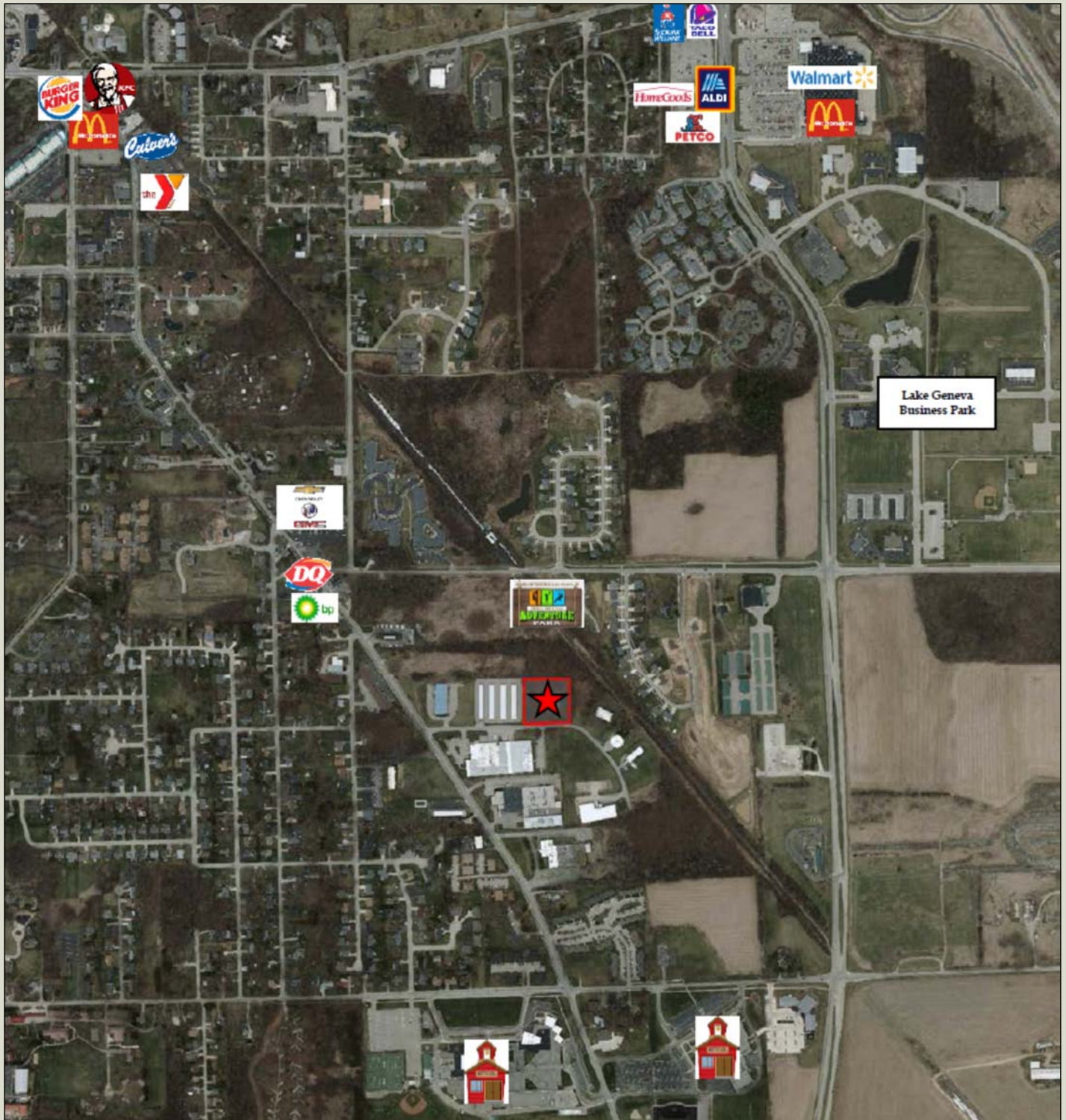


ENCORE

REAL ESTATE BROKERAGE

Phone: (262) 366-2526 / (414) 899-3537
Fax: (866) 671-0237
E-mail: Sales@EncoreWisconsin.com

Investment & Rental Property Specialists



401 Host Drive | Lake Geneva | Wisconsin | 53147